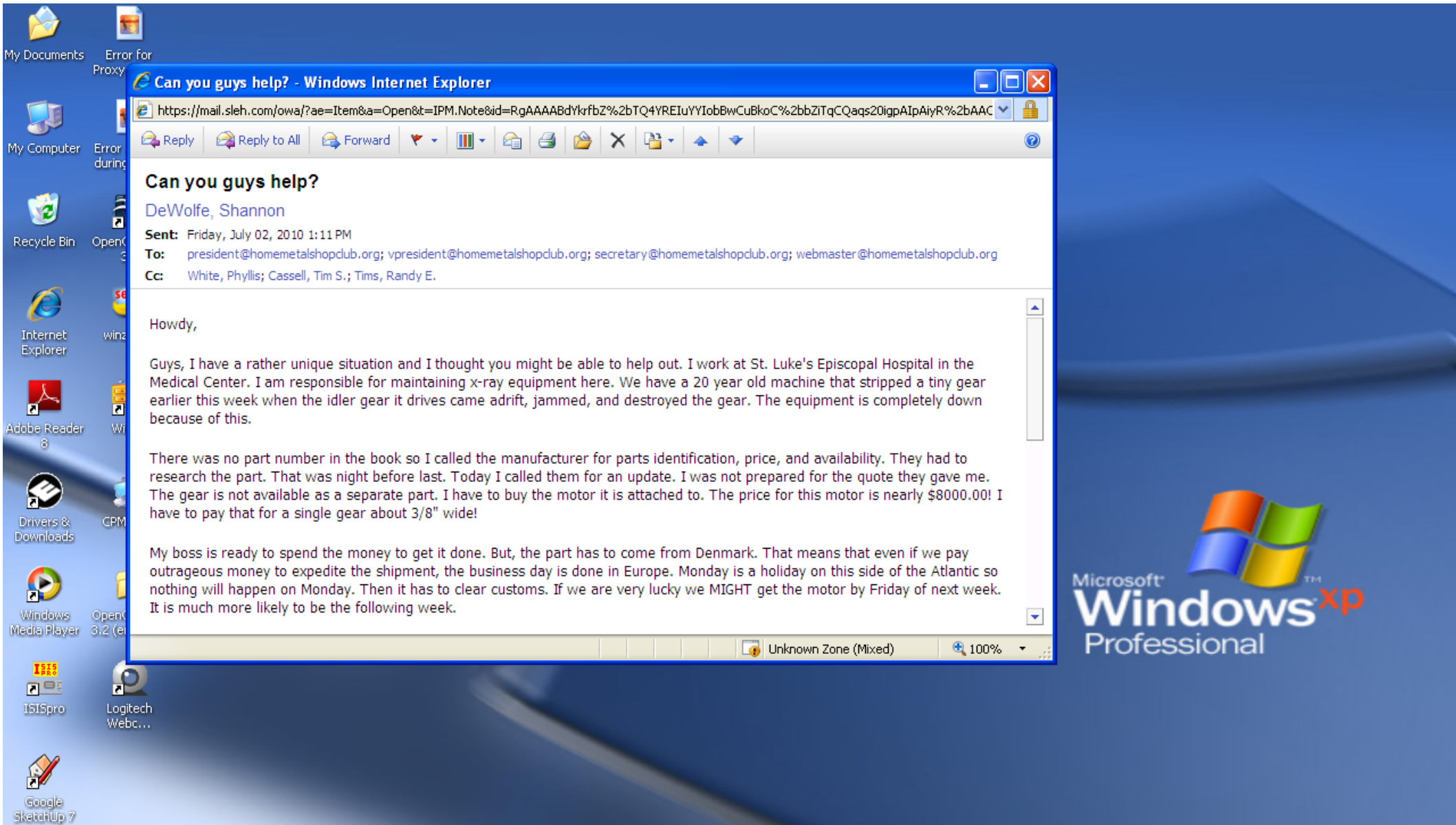


Replacing a Small Metric Gear on a XrayMachine

**Presented at the Home Metal Shop Club
08-14-2010
By Shannon DeWolfe**



Can you guys help? - Windows Internet Explorer

https://mail.sleeh.com/owa/?ae=Item&a=Open&t=IPM.Note&id=RgAAAABdYkrfbZ%2bTQ4YREIuYYIobBwCuBkoC%2bbZITqCQaqs20igpAIPaiyR%2bAAC

Reply Reply to All Forward

Can you guys help?

DeWolfe, Shannon

Sent: Friday, July 02, 2010 1:11 PM

To: president@homemetalshopclub.org; vpresident@homemetalshopclub.org; secretary@homemetalshopclub.org; webmaster@homemetalshopclub.org

Cc: White, Phyllis; Cassell, Tim S.; Tims, Randy E.

Howdy,

Guys, I have a rather unique situation and I thought you might be able to help out. I work at St. Luke's Episcopal Hospital in the Medical Center. I am responsible for maintaining x-ray equipment here. We have a 20 year old machine that stripped a tiny gear earlier this week when the idler gear it drives came adrift, jammed, and destroyed the gear. The equipment is completely down because of this.

There was no part number in the book so I called the manufacturer for parts identification, price, and availability. They had to research the part. That was night before last. Today I called them for an update. I was not prepared for the quote they gave me. The gear is not available as a separate part. I have to buy the motor it is attached to. The price for this motor is nearly \$8000.00! I have to pay that for a single gear about 3/8" wide!

My boss is ready to spend the money to get it done. But, the part has to come from Denmark. That means that even if we pay outrageous money to expedite the shipment, the business day is done in Europe. Monday is a holiday on this side of the Atlantic so nothing will happen on Monday. Then it has to clear customs. If we are very lucky we MIGHT get the motor by Friday of next week. It is much more likely to be the following week.

Unknown Zone (Mixed) 100%



DeWolfe, Shannon

Microsoft Office Outlook Web Access
Connected to Microsoft Exchange

Mail

- DeWolfe, Shannon
- Cabinet
- Calendar
- Checklist
- Contacts
- Deleted Items
- Drafts [9]
- Frequent Contacts
- Inbox
- Junk E-Mail
- Notes
- Outbox
- Sent Items
- Tasks
- THI (Network Admin)
- Search Folders

Mail

Calendar

Contacts

Tasks

Documents

Public Folders

RE: Can you guys help?

DeWolfe, Shannon

Sent: Friday, July 02, 2010 3:43 PM

To: dick@dickinsonian.com

Attachments: 000_1124.jpg (263 KB); 000_1123.jpg (326 KB); 000_1122.jpg (230 KB); 000_1121.jpg (194 KB); gear.doc (122 KB) [Open as Web Page]

Sent: Friday, July 02, 2010 2:30 PM

To: DeWolfe, Shannon; tinkering@yahoo.com

Subject: Re: Can you guys help?

Shannon,

Place the gear and its idler (separated by the space of an inch or so) with the center holes vertical on a piece of white paper. Include a ruler next to them for scale. Take a photo directly from above.

Then, place the gears on their edges (with teeth on the paper and the opposite teeth pointing straight up. Include a ruler for scale. Take another photo from directly above.

Email the 2 photos and any other info to me at webmaster@homemetalshopclob.org or dick@dickinsonian.com and I'll see if I or someone else can make a replacement for you.

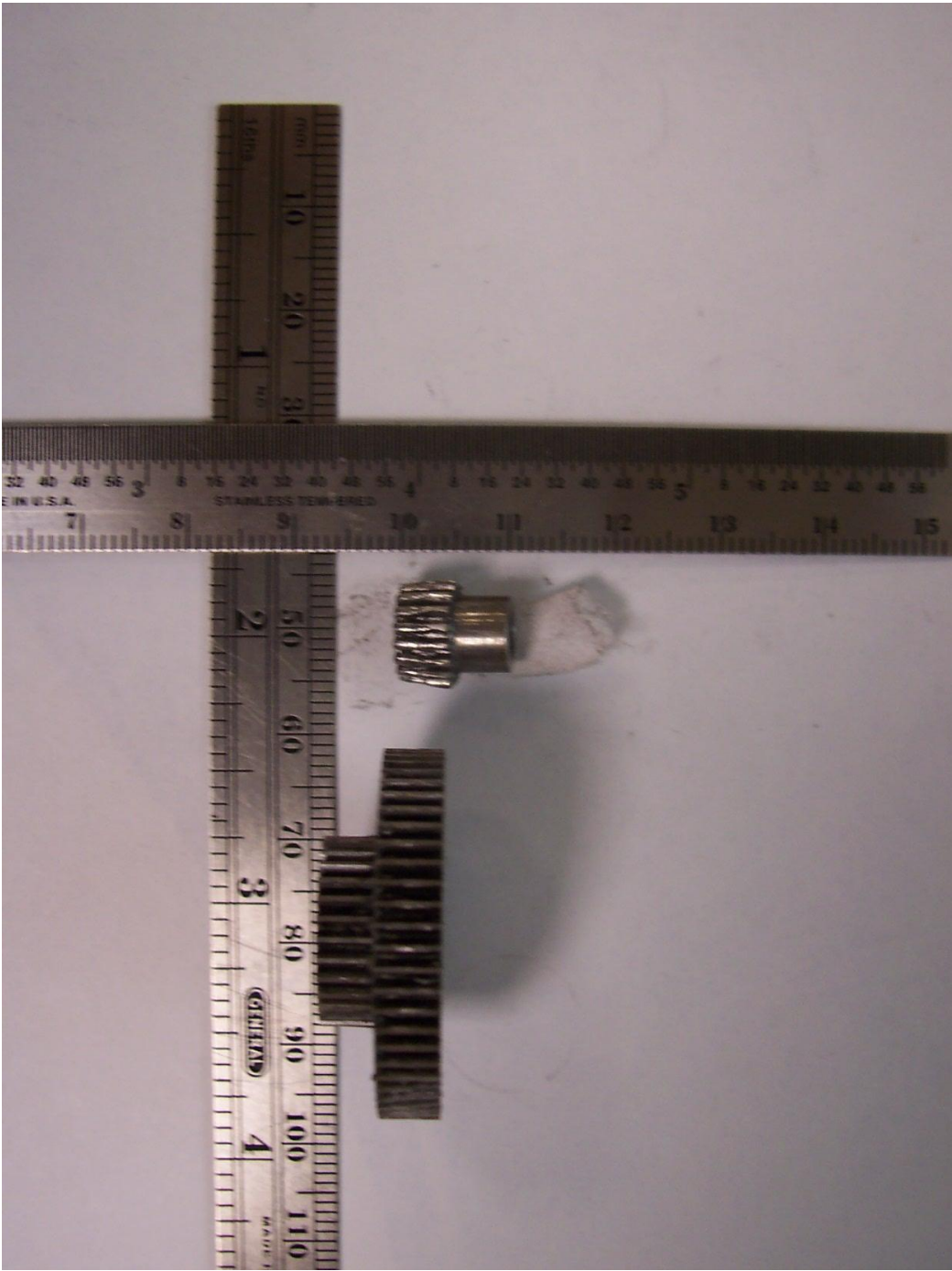
I am in Dickinson, TX, so I can't just pop by and take a look at the gears.

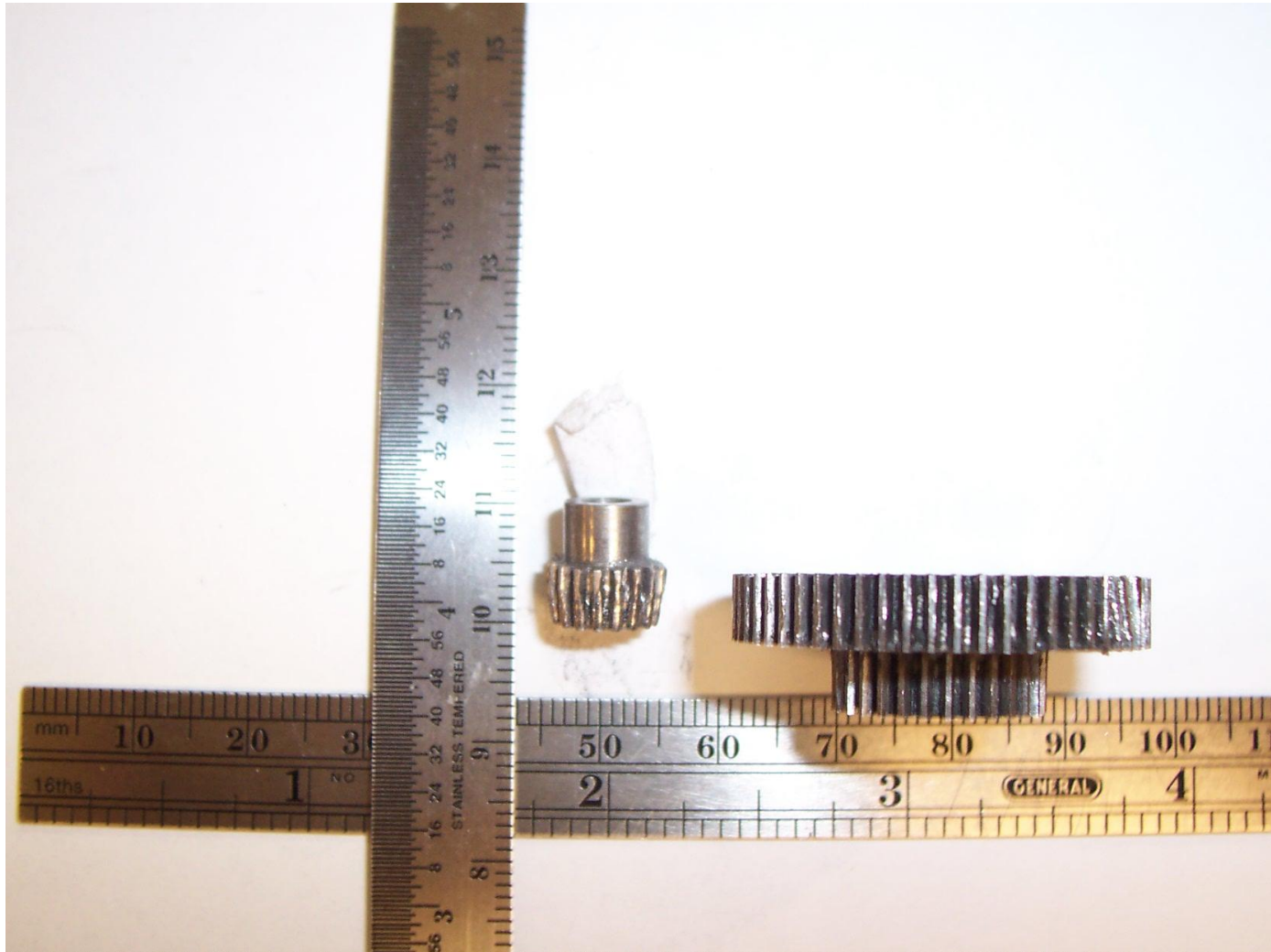
Dick Kostelnicek - HMSC Webmaster

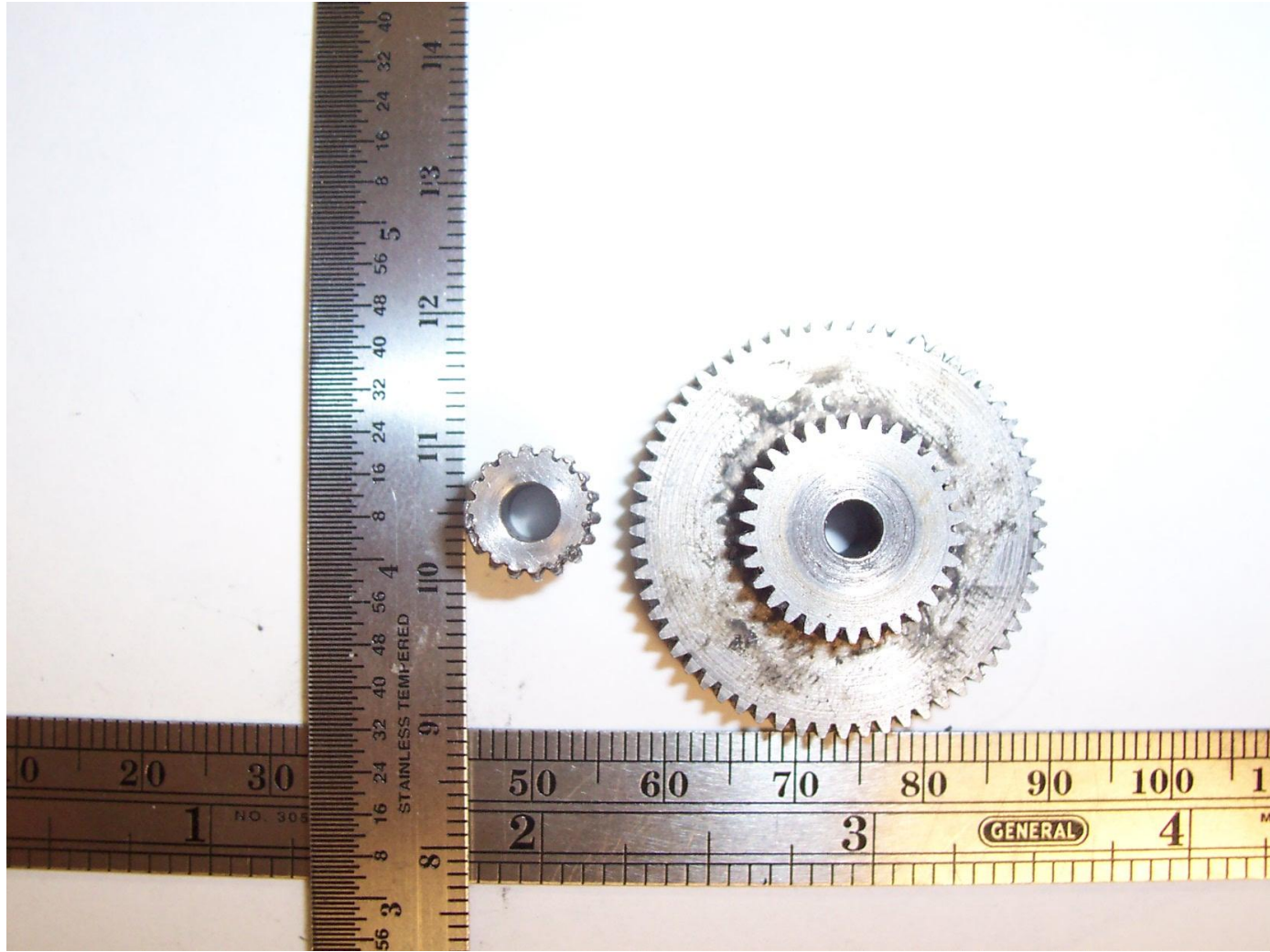
Unknown Zone (Mixed) 100%

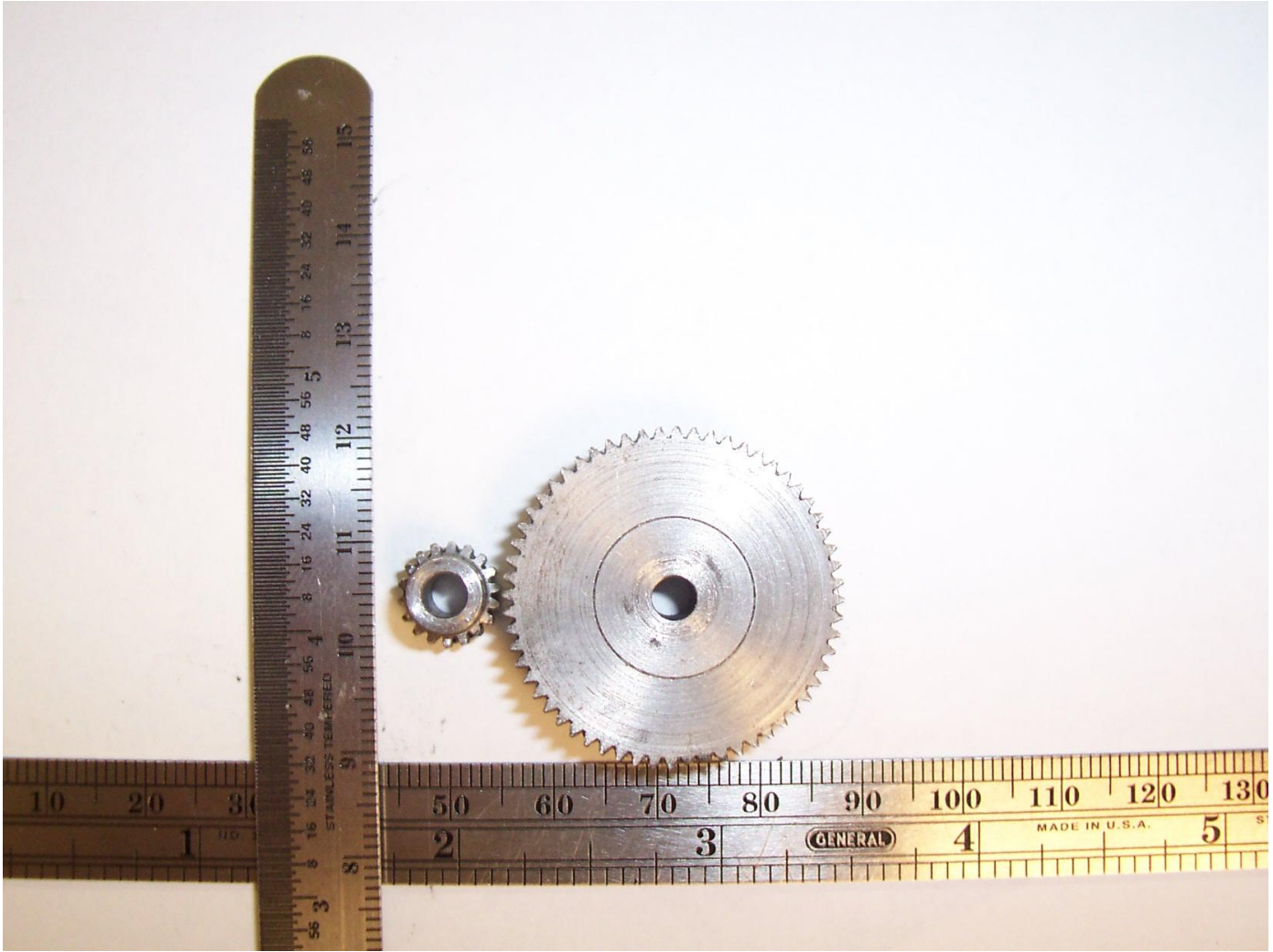
ge monitor supply

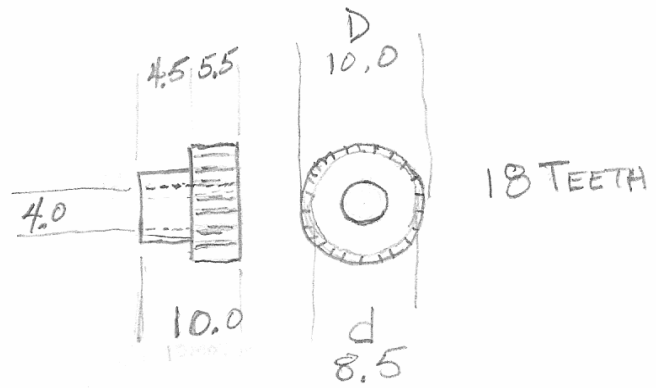
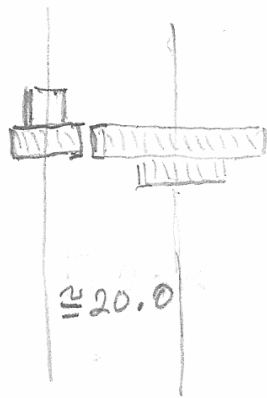
	7/8/2010
	7/7/2010
	7/6/2010
	7/2/2010
	7/2/2010
	6/30/2010
	6/30/2010
	6/29/2010
	6/29/2010











GEAR
(MILD STEEL?)



